

Mor Electric Heating Assoc., Inc.



Salamander SWB Radiant Fixture Installation and Maintenance Instructions

Warning

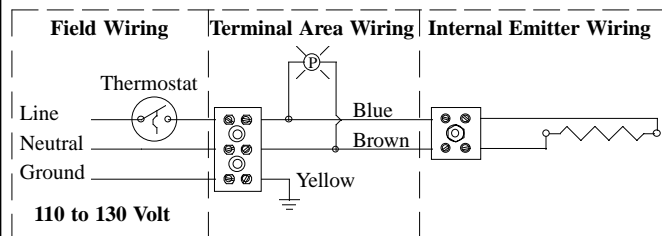
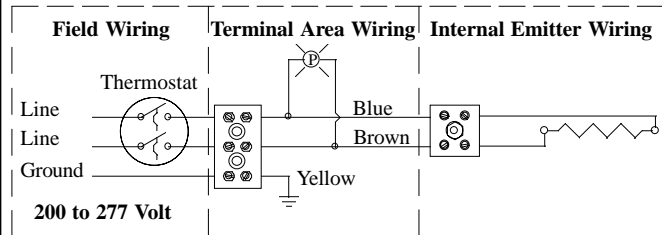
THIS INSTRUCTION SHEET CONTAINS IMPORTANT INFORMATION FOR THE PROPER INSTALLATION, USE, AND EFFICIENT OPERATION OF THE SWB RADIANT FIXTURE. CAREFULLY READ THIS SHEET BEFORE INSTALLING AND OPERATING THIS FIXTURE. FAILURE TO ADHERE TO THESE INSTRUCTIONS COULD RESULT IN FIRE, ELECTRICAL SHOCK, DEATH, SEVERE BURNS, OR PROPERTY DAMAGE.

- Hazard of fire:**
- * Do not mount SWB fixture near combustible materials or within a hazardous area.
 - * Do not recess the SWB fixture into a wall. The fixture must be surface mounted using the included mounting brackets or hung by chain.
 - * Keep drapery, clothes, rags, and other combustible items away from the fixture.
 - * Use high temperature wire for electrical connections within fixture/terminal area.

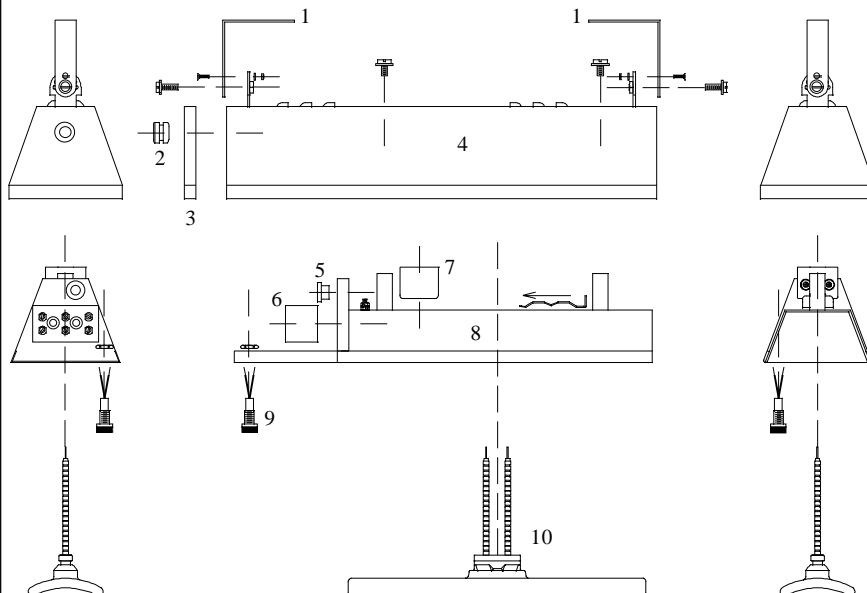
- Electrical Shock:**
- * Disconnect electrical power before servicing emitters. All electrical wiring must be done in accordance to local electrical codes by a qualified service technician.
 - * Do not touch the ceramic emitters after power is applied to the emitters.
 - * Never immerse ceramic emitters in liquids.

- Severe Burns:**
- * Ceramic emitters operate at high temperatures. Do not touch emitters or housing after power is applied.

Wiring



*** High temperature wire, with insulation suitable for the load amperage and operating temperatures, must be used to make the power connections to the ceramic terminal blocks. **All electrical wiring must be done in accordance with local electrical codes by a qualified service technician.**



Reflector Assembly and Parts Identification

- 1). Mounting Bracket Assembly and Hardware
- 2). Rubber Grommet
- 3). Aluminized Steel End Cap
- 4). Terminal Cover Housing
- 5). Ceramic Bushing
- 6). TB-3, 3 Pole Ceramic Terminal Block
- 7). TB-2, 2 Pole Ceramic Terminal Block
- 8). Reflector Assembly
- 9). Pilot Light
- 10). Ceramic Emitter with Mounting Clip

To order replacement parts contact us

Mor Electric Heating Assoc., Inc.

5880 Alpine N.W., Comstock Park, Michigan 49321, USA
Tel: 1-616-784-1121 or 1-800-442-2581 Fax: 1-616-784-7775
e-mail: sales@infraredheaters.com